

TOUCH★ CREATE★ CONNECT★

A science museum that lets you come face-to-face with the wonders of science, space, and people. Touch, create, and connect with the world of science and space – a fun and educational experience for all ages!



Planetarium Showings

| | 10:00 | 11:15 | 12:30 | 13:30 | 14:45 | 16:00 | 17:30 | 19:00 |
|----------------------|---------|----------|---------|---------|----------|---------|---------|---------|
| Mon.-Thurs. | | | | | | General | — | — |
| Fri. | General | Children | Healing | General | Children | General | — | Special |
| Sat., Sun., holidays | | | | | | Special | General | Special |

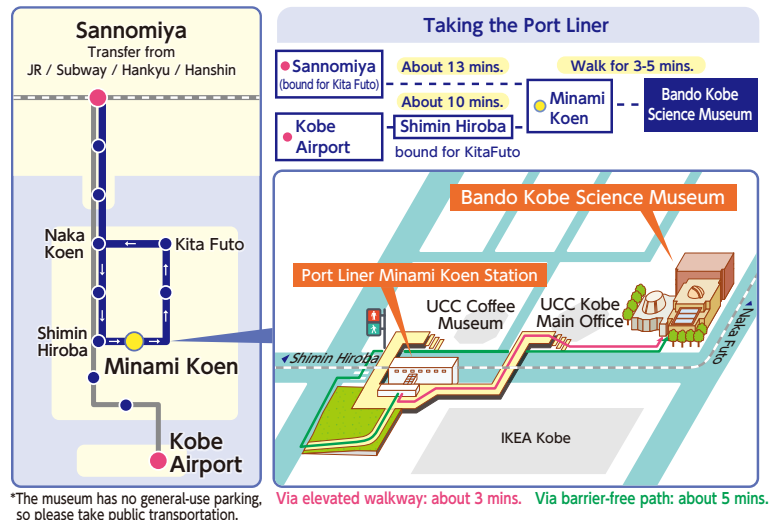
Children: program for children; General: general program; Healing: healing through star viewing; Special: special program

*Capacity of 230 seats for each showing (no entry allowed after showing starts).
*Children in the 3rd grade of elementary school or younger must be accompanied by an adult.
*Children in junior high school or younger must be accompanied by an adult for showings that start at 17:30 or later.
*Showings may be canceled due to planetarium maintenance. For more information, please, visit our website or call.
*On evenings with events such as star watching or the "Aroma Planetarium" program, the 17:30 and 19:00 showings at the planetarium are suspended.
*The program may be changed when school groups have reservations.

Requests from the Science Museum

- ★ No eating or drinking in the museum (except for the basement lobby). Smoking is prohibited inside the museum and in all surrounding areas.
- ★ Tours are not allowed for unaccompanied elementary school and junior high school students after 18:00.
- ★ No entry to the planetarium is allowed after a showing has started.

Access Map



Museum Hours and Closed Days

| | | |
|--------------|-----------------------------------------------------------|-----------------------------------------------------------------------------------------------------|
| Museum Hours | Mon. to Thurs. | 9:30~16:30 |
| | Fri., Sat., Sun., holidays/ spring and summer holidays | 9:30~19:00 Last planetarium showing at 19:00. *No admission from 30 minutes before closing time. |
| Closed Days | ★Wednesdays (Open if holiday, then closed the next day) | |
| | ★Maintenance days | *No closed days during spring and summer holidays |
| | ★Year-end/New Year's holiday period | |

Admission

| | Exhibit Rooms | | Planetarium | |
|--------------------------------------|---------------|-------|-------------|-------|
| | Individual | Group | Individual | Group |
| Adults (Ages 18 and up) | ¥600 | ¥480 | ¥400 | ¥320 |
| Students (elementary to high school) | ¥300 | ¥210 | ¥200 | ¥140 |

*Young children: free of charge *Groups (30 or more) must make reservations in advance by telephone

Become a Member!

Friends of the Science Museum

Friends of the Science Museum receive special offers throughout the year to more fully enjoy the science museum. For more details, please inquire at the office by the entrance on the first floor.

| Annual Membership Fee | Type of Membership | Annual Membership Fee |
|-----------------------|-----------------------------------------------|-----------------------|
| | Student (elementary to high school) | ¥2,000 |
| | Adult (ages 18 and up) | ¥3,000 |
| | Family (up to 5 people in a member household) | ¥5,000 |

※Admission paid on the day an annual membership is purchased will be refunded.

Special Offers

- ★ Show your membership card to get in to the Exhibit Rooms or Planetarium at no charge all year round.
- ★ You will receive notices of member-only events.
- ★ A science museum newsletter will be mailed to your home (quarterly).
- ★ You may borrow books from the Science Library.

BANDO Bando Kobe Science Museum

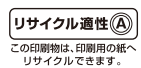
7-7-6 Minatojima Nakamachi, Chuo-ku, Kobe, 650-0046
TEL.078-302-5177 FAX.078-302-4816 URL www.kobe-kagakukan.jp
Authorized manager: SFG Kobe

The Bando Kobe Science Museum is also known as the Kobe Municipal Science Museum

© 2017 BANDO KOBE SCIENCE MUSEUM



古紙パルプ配合率70%再生紙を使用



この印刷物は、印刷用の紙へリサイクルできます。

神戸市広報印刷物登録 平成29年度第46号 (広報印刷物規格B-2類)



BANDO Bando Kobe Science Museum

Home to Kobe's only planetarium, this science museum features hands-on exhibits, workshops, and science classes that let you have fun while learning about science and space.

3F Science Lounge
 This multi-purpose space offers science-related books recommended by the staff, and workshops are also held here. Use the lounge to take a break between seeing exhibits.

1F Museum Shop
 Based on the "Touch, Create, Connect" concept, you'll find a wide range of merchandise, educational toys, books, and other items that make science fun and easy to understand. They also make great souvenirs and gifts!

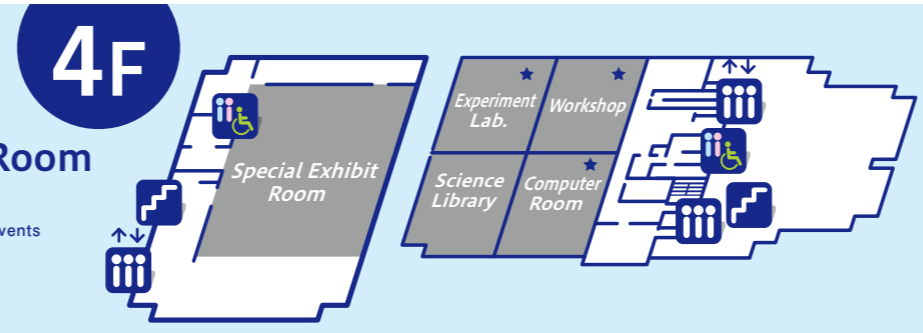
1F Tea Room
 Sit down and relax while enjoying a drink or lunch selection from the menu. The glass walls create a bright, calming interior space. You can also enter directly from outside the science museum.

5F Observatory

Main Building 5F Observatory
Observatory (Take stairs from 4F to 5F)
 Learn about the 25cm-diameter refracting telescope "Taiyo" and see projections of sunspots and solar prominences.
 ★ Hours: ① 11:40~12:00 ② 13:30~13:50 (Oct.-Mar.) / 14:30~14:50 (Apr.-Sept.)

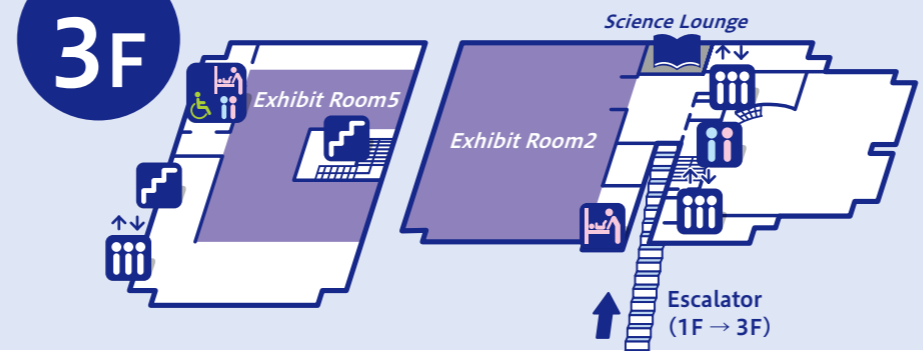
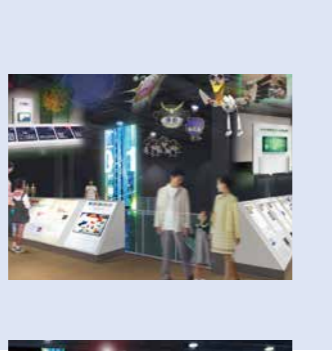


New Building 4F
Special Exhibit Room
 For large exhibits and events.
 ※(Only open when exhibits and events are running)

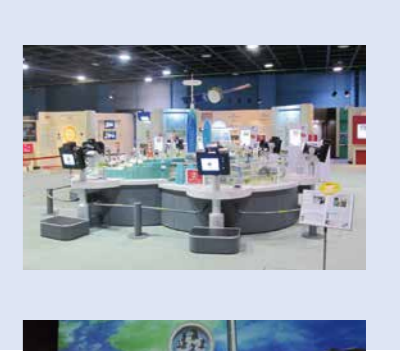


Main Building 4F
Experiment Lab* / Workshop* / Computer Room* / Science Library
 Various educational courses and extracurricular activities for clubs are conducted here (Omohiro Science Museum Club, Kobe Boys & Girls Inventors' Club, Kobe Youth Amateur Radio Club, Kobe Astro Club). In addition, you are free to browse books and other materials in the Science Library.
 ※ For inquiries on courses and clubs, please visit our website or ask in person at the reception desk.
 ※ Rooms marked with a star (★) are open only when occupied through an application system.

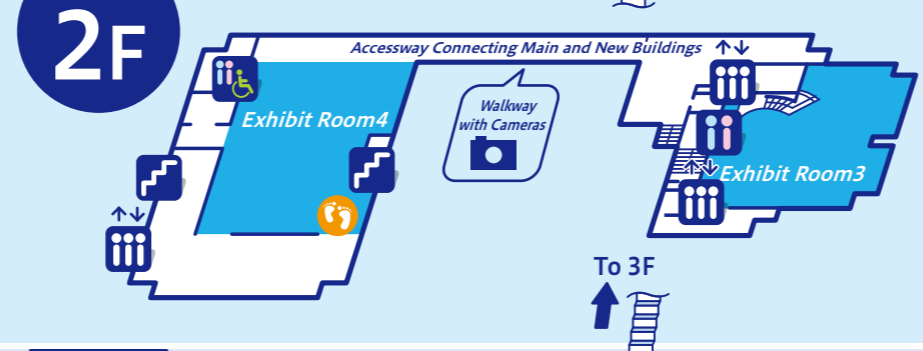
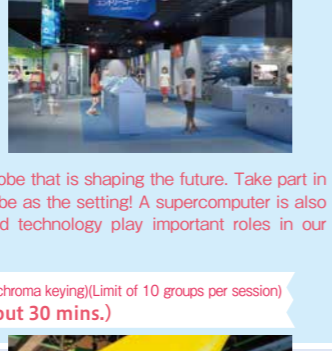
New Building 3F Exhibit Room 5
Life Science
 A floor of dioramas and interactive displays that explain the mysteries of life and the human body, down to cells and DNA.
 A new exhibit has been added that focuses on cutting-edge areas of medical care such as iPS cells, medicine, and cancer treatment.



Main Building 3F Exhibit Room 2
Information Science
 Information surrounds us. On this floor you will learn the principles of how information flows, from sound and light to electromagnetic waves. You will also get to experience hands-on the information in your own body, such as your fingerprints, voice and iris of the eye.



New Building 2F Exhibit Room 4
Science and Technology in Kobe
 Learn about the science and technology coming from Kobe that is shaping the future. Take part in science and technology missions with the streets of Kobe as the setting! A supercomputer is also on display in the atrium space. See how science and technology play important roles in our everyday lives.
 ☺ **Kobe Skywalk** (simulation using composite images from chroma keying)(Limit of 10 groups per session)
 ①10:00 ②12:00 ③14:00 (Session lasts about 30 mins.)



Main Building 2F Exhibit Room 3
Space and Earth
 Learn about the Earth and planets of the solar system through a realistic simulation of outer space. The three exhibits - "Space-Time Hopper", "Deep Quest Door", and "Earth Exploration Scope" - will stimulate both your mind and your heart.



New Building 1F Exhibit Room 6
Creative Science
 You'll be surprised at how much you learn as you play! Your questions become answers and your creativity gets a boost! Fun, easy-to-understand exhibits enjoyable for all ages, from small children to adults.
 ✈ **Hang Glider** (elementary school and older, up to 60 kg)(Limit of 15 children per session)
 ①10:30 ②12:45 ③15:00 (Session lasts about 30 mins.)
 🧪 **Science Experiment Show "Fun Experiment Square"** 13:45~ (Show lasts about 20 mins.)



Main Building 1F Exhibit Room 1
Dynamics & Mechanics / Materials & Energy
 Hands-on exhibits that use your body teach about various kinds of energy and about the forces and mechanisms that act on objects. Try a flight simulator to control an airplane or operate an industrial robot.
 🧪 **Science Experiment Show at Chemical Workshop** 10:30~ (Show lasts about 20 mins.)



New Building B1F
Basement Lobby and Hall
 Lectures and events are held in the hall. Please use this lobby for your lunch and snack time.



Main Building 1F Planetarium
Prologue Life - Microcosm of Science
 The mysteries of life are scientifically explained through models of cells, DNA, and more.

Main Building 1F Planetarium
 Known as the closest place in Kobe to the starry sky, this beloved planetarium has a 20m-diameter dome that creates a night sky upon which 25,000 stars can be projected.